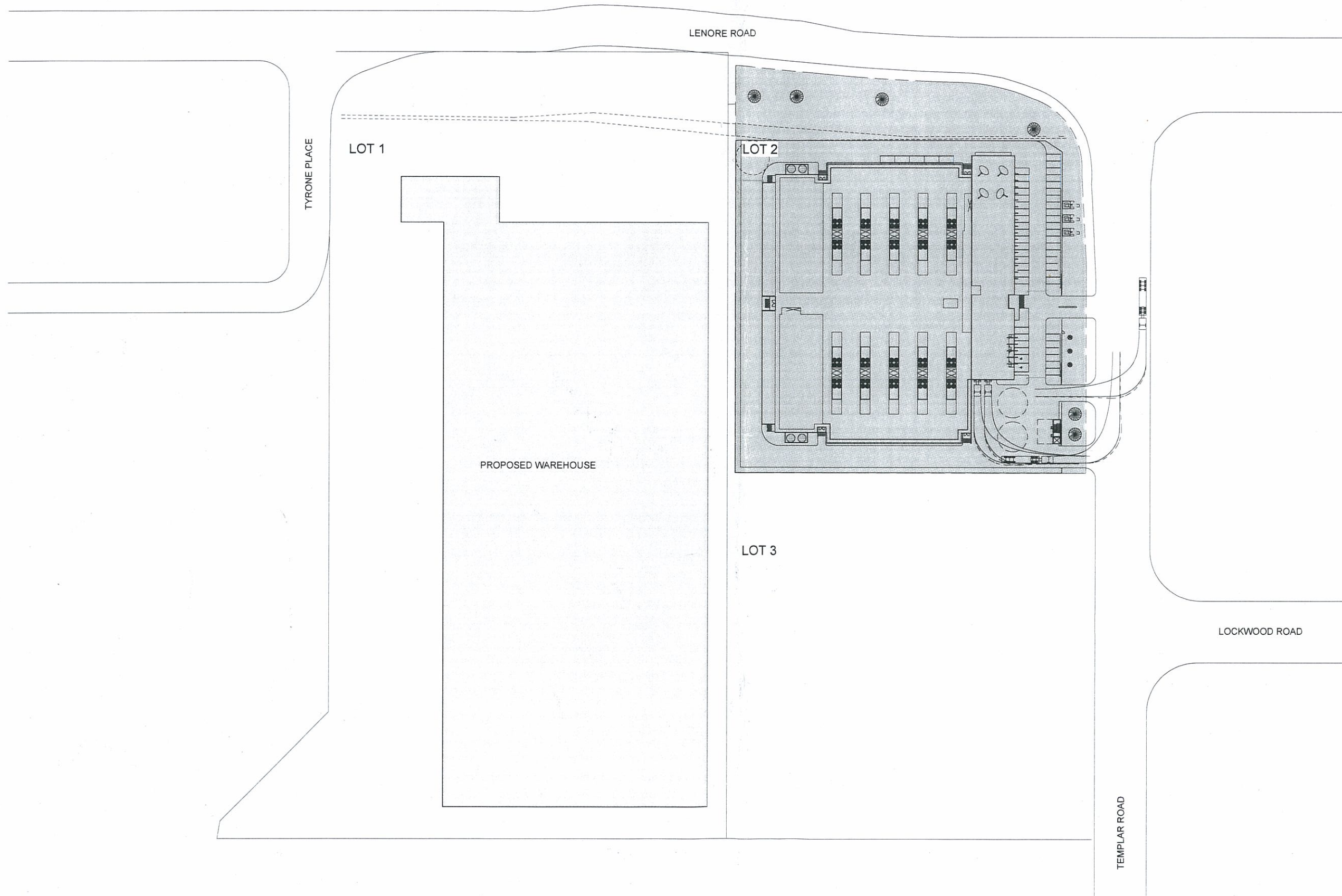




No.	Date	Description
A	24.12.10	DA ISSUE



- Use written dimensions only
- Do not scale from drawing
- Contractors shall confirm all dimensions on-site prior to commencing any work or making any shop drawings
- All materials to be used in accordance with the manufacturer's specifications and instructions and shall comply with the relevant Australian Standards.
- Copyright of this drawing and design remain the property of Greenbox Pty Ltd

greenbox
architecture
greenbox architecture pty ltd
abn: 79 139 779 098
Suite 31 Upper Deck, Jones Bay Wharf
26-32 Pirrama Road
Pyrmont NSW 2009
p: 61 2 8069 8930
w: greenboxarchitecture.com

DA
NOT FOR CONSTRUCTION

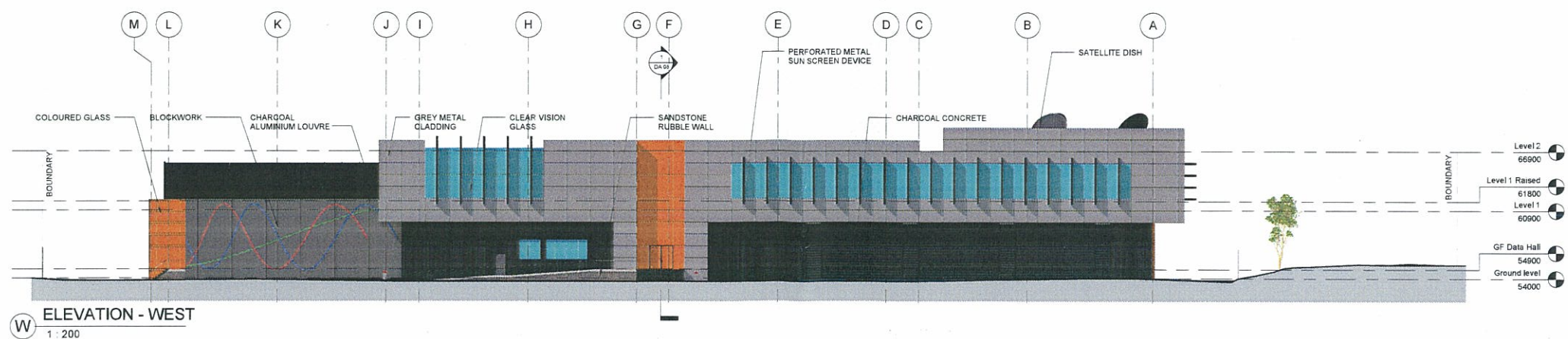
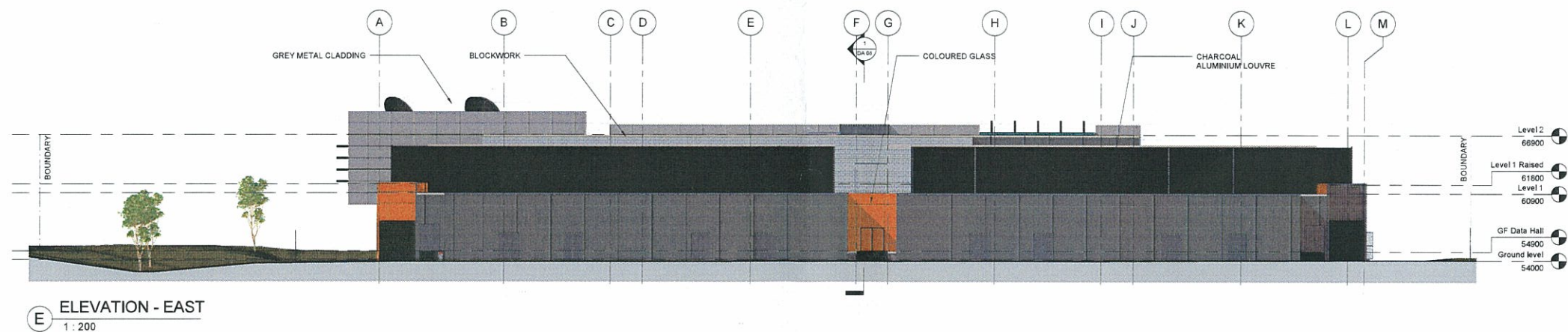
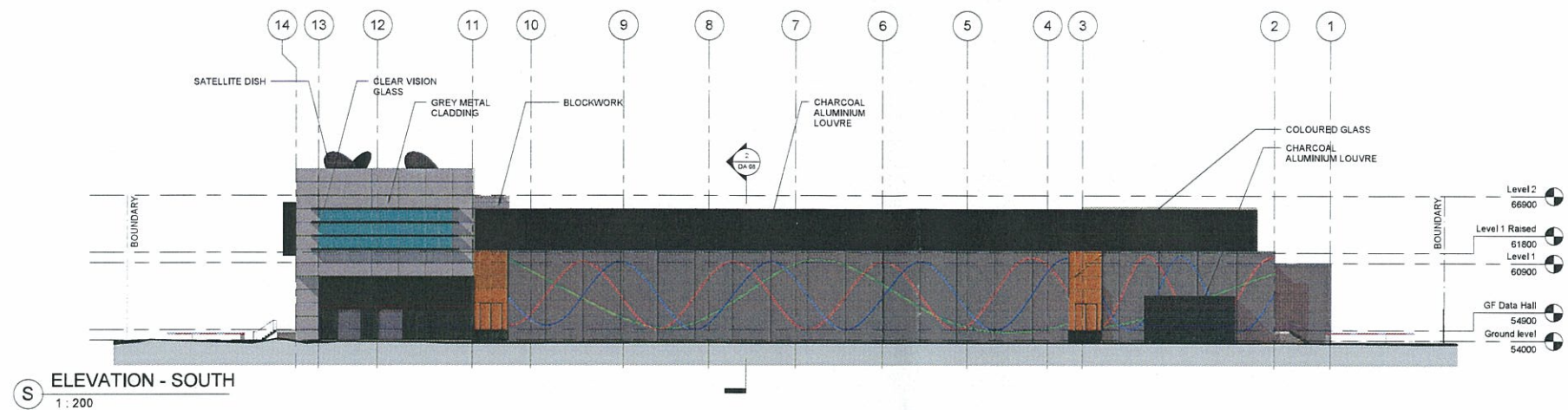
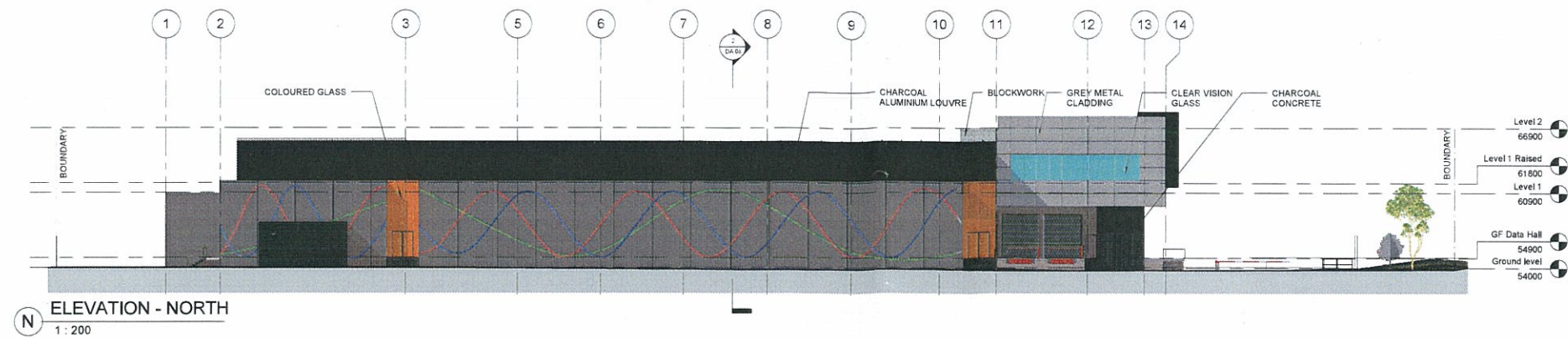
Sc: 1:500 0 5 10 15 25m

DIGITAL REALTY DATA FIRM

2 TEMPLAR ROAD
ERSKINE PARK
NSW

SITE PLAN	
Scale	1:500
Date	24.12.2010
Drawn by	C
Checked by	

DA 02 A



MATERIALS LEGEND

[Pattern]	SANDSTONE WALL
[Pattern]	SANDSTONE WALL
[Pattern]	CHARCOAL ALUMINIUM LOUVRE
[Pattern]	GREY ALUMINIUM CLADDING
[Pattern]	PRECAST CONCRETE - CHARCOAL
[Pattern]	BLOCKWORK
[Pattern]	COLOURED GLASS
[Pattern]	CLEAR-VISION GLASS

No. Date Designer

- Use written dimensions only
- Do not scale from drawing
- Contractors shall confirm all dimensions on-site prior to commencing any work or making any shop drawings
- All materials to be used in accordance with the manufacturer's specifications and instructions and shall comply with the relevant Australian Standards.
- Copyright of this drawing and design remain the property of Greenbox Pty Ltd

greenbox
architecture
greenbox architecture pty ltd
apt. 79 139 779 096
Suite 31 Upper Deck Jones Bay Wharf
26-32 Pirrama Road
Pyrmont NSW 2009
p: 61 2 8069 8930
w: greenboxarchitecture.com

DA
NOT FOR CONSTRUCTION

Sc. 1:200 0 1 2 3 5 10m

DIGITAL REALTY DATA FIRM

2 TEMPLAR ROAD
ERSKINE PARK
NSW

ELEVATIONS

SD	1:200	DA
24.12.2010	6	
DA 06	A	



NO. 001
DATE 10/04/2016
DESIGNER

LENORE ROAD

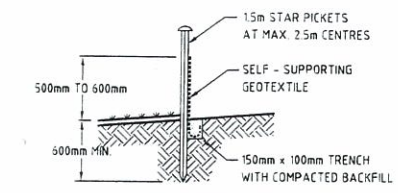
TEMPLAR ROAD

SEDIMENT AND EROSION CONTROL - PLAN

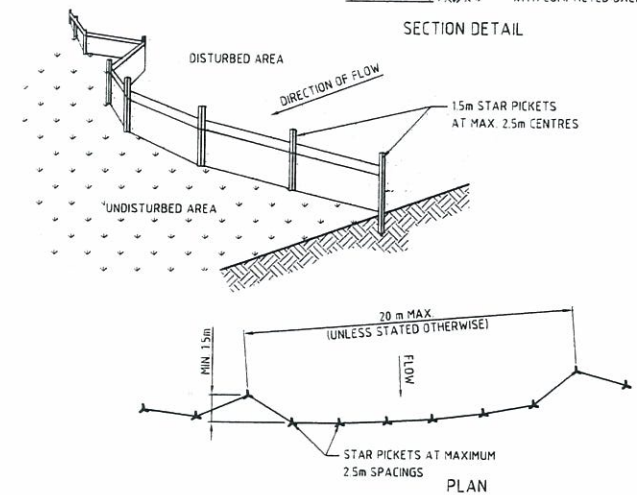
SCALE 1:500

LEGEND

- SEDIMENT FENCE
- GEOTEXTILE INLET FILTER (FOR PITS WITHIN LANDSCAPED AREAS)
- GEOTEXTILE INLET FILTER (FOR PITS WITHIN PAVEMENT AREAS)
- STABILISED SITE ACCESS



SECTION DETAIL



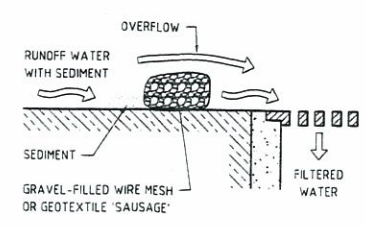
PLAN

CONSTRUCTION NOTES:

1. CONSTRUCT SEDIMENT FENCES AS CLOSE AS POSSIBLE TO BEING PARALLEL TO THE CONTOURS OF THE SITE, BUT WITH SMALL RETURNS AS SHOWN IN THE DRAWING TO LIMIT THE CATCHMENT AREA OF ANY ONE SECTION. THE CATCHMENT AREA SHOULD BE SMALL ENOUGH TO LIMIT WATER FLOW IF CONCENTRATED AT ONE POINT TO 50 LITRES PER SECOND IN THE DESIGN STORM EVENT, USUALLY THE 10-YEAR EVENT.
2. CUT A 150mm DEEP TRENCH ALONG THE UPSLOPE LINE OF THE FENCE FOR THE BOTTOM OF THE FABRIC TO BE ENTRENCHED.
3. DRIVE 15 METRE LONG STAR PICKETS INTO THE GROUND AT 2.5 METRE INTERVALS (MAX) AT THE DOWNSLOPE EDGE OF THE TRENCH. ENSURE ANY STAR PICKETS ARE FITTED WITH SAFETY CAPS.
4. FIX SELF-SUPPORTING GEOTEXTILE TO THE UPSLOPE SIDE OF THE POSTS ENSURING IT GOES TO THE BASE OF THE TRENCH. FIX THE GEOTEXTILE WITH WIRE TIES OR AS RECOMMENDED BY THE MANUFACTURER. ONLY USE GEOTEXTILE SPECIFICALLY PRODUCED FOR SEDIMENT FENCING. THE USE OF SHADE CLOTH FOR THIS PURPOSE IS NOT SATISFACTORY.
5. JOIN SECTIONS OF FABRIC AT A SUPPORT POST WITH A 150-mm OVERLAP.
6. BACKFILL THE TRENCH OVER THE BASE OF THE FABRIC AND COMPACT IT THOROUGHLY OVER THE GEOTEXTILE.

SEDIMENT FENCE DETAIL

NOT TO SCALE

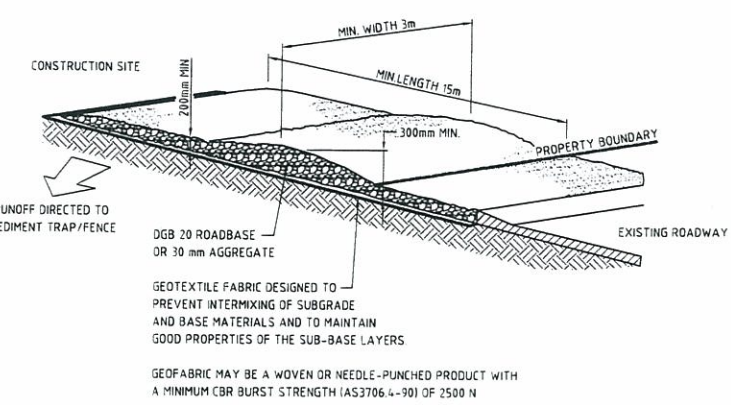


CONSTRUCTION NOTES:

1. FABRICATE A SEDIMENT BARRIER MADE FROM GEOTEXTILE OR STRAW BALES.
2. DO NOT COVER THE INLET WITH GEOTEXTILE UNLESS THE DESIGN IS ADEQUATE TO ALLOW FOR ALL WATERS TO BYPASS IT.

GEOTEXTILE INLET FILTER DETAIL

FOR PITS WITHIN PAVEMENT AREAS
NOT TO SCALE



CONSTRUCTION NOTES:

1. STRIP THE TOPSOIL, LEVEL THE SITE AND COMPACT THE SUBGRADE.
2. COVER THE AREA WITH NEEDLE-PUNCHED GEOTEXTILE.
3. CONSTRUCT A 200mm THICK PAD OVER THE GEOTEXTILE USING ROAD BASE OR 30mm AGGREGATE.
4. ENSURE THE STRUCTURE IS AT LEAST 15m LONG OR TO BUILDING ALIGNMENT AND AT LEAST 3m WIDE.
5. WHERE A SEDIMENT FENCE JOINS ONTO THE STABILISED ACCESS, CONSTRUCT A HUMP IN THE STABILISED ACCESS TO DIVERT WATER TO THE SEDIMENT FENCE.

STABILISED SITE ACCESS DETAIL

NOT TO SCALE

- Use written dimensions only
- Do not scale from drawing
- Contractors shall confirm all dimensions on-site prior to commencing any work or making any shop drawings
- All materials to be used in accordance with the manufacturer's specifications and instructions, and shall comply with the relevant Australian Standards.
- Copyright of this drawing and design remain the property of Greenbox Pty Ltd

greenbox
architecture
greenbox architecture pty ltd
abn 79 139 779 056
Suite 31 Upper Deck Jones Bay Wharf
26-32 Pirrama Road
Pyrmont NSW 2009
p 61 2 8069 8930
w greenboxarchitecture.com

DA
NOT FOR CONSTRUCTION

DIGITAL REALTY DATA FIRM

2 TEMPLAR ROAD
ERSKINE PARK
NSW

SEDIMENT AND EROSION

Author: 40C
24/12/2016
E

DA 12 A